

Symantec Enterprise Vault™ for Microsoft® Exchange

Store, Manage, and Discover Critical Business Information

Trusted and proven email archiving

Enterprise Vault, the industry leader in email and content archiving, enables companies to store, manage, and discover unstructured information across the enterprise. Using a market proven architecture, Enterprise Vault provides an open, intelligent and manageable approach to improve management, reduce costs and control information risk.

Enterprise Vault for Microsoft Exchange provides a cost-effective and easy-to-administer approach to efficiently manage email storage via automated, policy-controlled archiving to online stores for active retention and seamless retrieval of messages and attachments. A stand-alone software based solution, Enterprise Vault integrates with Microsoft Exchange environments to help you take control over the explosive growth of vital business content found in email. Each Enterprise Vault software component carries distinct advantages to help you meet this goal.

Automatic mailbox management

With Enterprise Vault, you can eliminate quotas and message size restrictions. Give your users a mailbox of virtually unlimited size while controlling the growth of storage resources. Admin-defined policies automatically archive individual mailbox email and attachments out of Exchange and into online Enterprise Vault stores. Optionally, shortcuts are left behind, allowing users to easily view or restore the original items transparently through Microsoft Outlook® or Outlook Web Access, or via extended Web-based search functions. This enables

Exchange to focus on the dynamic handling of newer information while Enterprise Vault software acts as a long-term repository for older information. Exchange Server performance is dramatically improved, and users can enjoy instant access to their email without the associated cost and management issues.

Exchange managed folder support

Enterprise Vault can also synchronize settings with Microsoft Exchange 2007 Managed Folders in order to map archived items with Microsoft associated retention categories for simplified policy management, and storage optimization – in line with the way end users work with live Exchange data.

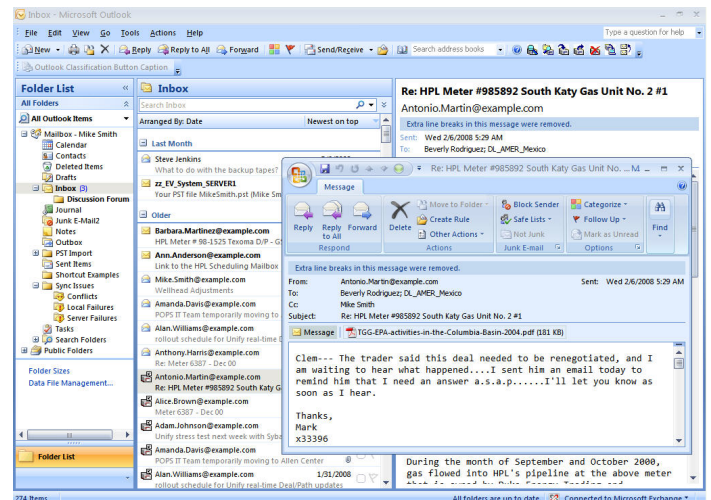


Figure 1. With Enterprise Vault software, access to the archived information is seamless—end users need never know archiving has taken place, even if they are offline.

PST migration

Enterprise Vault software allows organizations to migrate all existing PST file data into the archive repository. Restoring user search and accessibility to this data enables the organization to effectively achieve PST file eradication.

Key features include:

- Enterprise-wide search to locate, collect, and migrate PST files
- Removal of the backup, data leakage, stability, and storage waste problems inherent in PST files
- Effective eradication of PST files and reintroduction of legacy data into IT control

Journal archiving

Enterprise Vault software works seamlessly with Exchange journaling with minimal overhead to the Exchange server. Enterprise Vault can be configured to retain a copy of all email messages sent and received, helping to ensure that they are kept for the period of time required to meet regulatory or legal retention requirements. Additionally, optimized single instancing across the journal archive and mailbox archive within Enterprise Vault will dramatically reduce the cost of the archive as items are only stored once regardless of source or location.

Public Folder archiving

Individual folders or folder hierarchies may be archived and replaced by shortcuts, and folder access controls are synchronized with Enterprise Vault access to control search scope.

Seamless end user experience

Enterprise Vault is a seamless extension to end users existing tools - giving visible access to archived information anytime, anywhere. Indexing of archived email and attachments combined with seamless integration with Outlook, Outlook Web Access, and Exchange allows users to quickly and easily search and retrieve information (see Figure 1). Shortcuts and Web-based search functions keep users instantly in touch with all archived email content on both a mailbox and an organizational level. Whether a search is performed for large volumes of email or simply to locate a single item, the seamless presentation of the archived data is the winning feature of Enterprise Vault software.

Vault Cache - offline access

Vault Cache provides offline access to a users archive - even when not connected to the corporate network. Enterprise Vault software can be configured to provide users with a local copy of archived items stored on their local hard drive. When a disconnected user tries to access an archived item via a shortcut, this item will be retrieved from the Vault Cache, promoting access to important content wherever it is located. As the archive changes, the offline copies are synchronized and all folder structures and item locations are maintained. At the same time, the user's email is still archived to the corporate archive, so it is not vulnerable to loss or damage.

Mobile Search support¹

Beyond Exchange and Outlook, end users are able to access archived content from Windows Mobile and Blackberry devices as Enterprise Vault provides mobile search capabilities to access archived content from mobile browsers in order to provide access to all archived email and attachments on a handheld device.

Exchange migration

Archiving older items out of Exchange 2000 Server, Exchange Server 5.5, and Exchange Server 2003 message stores and into Enterprise Vault software reduces the size of the store by up to 80 percent. This allows you to move email to Exchange Server 2007 much faster, providing a reduction in cost and time associated with migration, as well as improving server consolidation ratios.

Email classification

Email archiving aids the long-term retention, management, and discovery of information, optimizing IT efficiencies and lowering business risk. But as messaging volumes grow, organizations are resorting to message classification to control storage and operational costs. By classifying email (for example, business, personal, or junk), organizations can decide whether or not to store a message. Granular retention policies can then be set across different categories of information and can determine the optimal storage

media to utilize. Such policies help significantly lower operational costs as they keep the size of the archive in check. Additionally, accurate classification of messages provides context, enabling easier retrieval and processing.

Email classification allows organizations to:

- Enable automated or user-driven classification
- Lower storage costs and resources
- Avoid archiving junk or irrelevant content (such as newsletters and bounce messages)
- Tag items for faster and more efficient search and review

Lifetime management of email

Automatically manage the email life cycle from composition to deletion. Protect corporate intellectual property, retain access, and enable rapid discovery of content based on corporate defined policies. These policies can be defined and applied to an Active Directory attribute via LDAP, or even to an individual user (see Figure 2).

¹ Mobile Search support available as beta release as of October 2008. Check with your Symantec representative for release status of this feature within Enterprise Vault 8.0.

Data Sheet: Archiving Symantec Enterprise Vault™ for Microsoft® Exchange

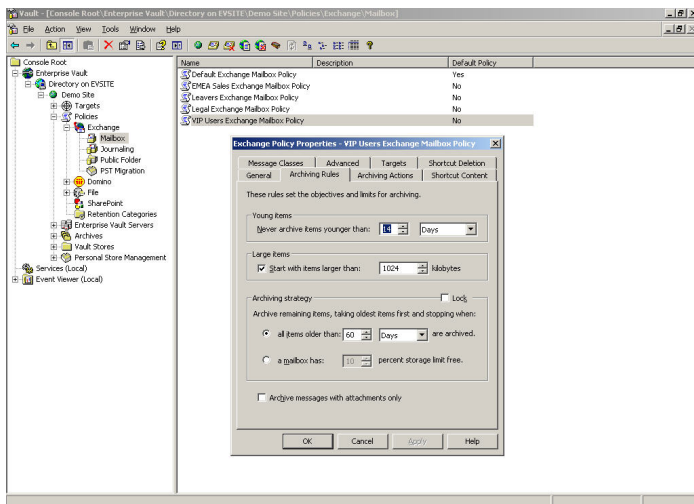


Figure 2. Policies are both reusable and granular to an Active Directory attribute level via LDAP or to an individual user level.

Encrypted email

Enterprise Vault provides native integration with Microsoft Rights Management Services so that encrypted messages that need to be archived are decrypted and indexed applying the necessary retention policies. This also allows encrypted messages to be searched and retrieved in the event of litigation or regulatory investigations.

Windows Desktop Search

Enterprise Vault can be integrated with Windows Desktop Search to provide search features from a common, familiar search tool. This helps to keep knowledge workers productive, enabling them to quickly and easily find what they are looking for across multiple locations from a single search window. Searching from a single location helps users quickly find and retrieve messages and documents, whether they are stored on

the desktop or in Exchange or archived in Enterprise Vault.

Software development kit

Various integration mechanisms enable customization of Enterprise Vault functionality and provide the ability to plug in third-party components. Further, Enterprise Vault software archive services may be harnessed by custom and third-party applications through the use of fully documented APIs developed within the .NET framework.

Key technology highlights

- Optimized Single-Instance-Storage

Efficiently archives information by storing just one copy of a file or message, regardless of the number of times it occurs, significantly lowering the long term total cost of ownership by reducing the archive size.

- Seamless End User Experience

Enterprise Vault is designed to be a seamless extension to users existing tools (Outlook, Notes, SharePoint, etc) giving visible access to archived information anytime, anywhere.

- Simplified Installation and Administration

Provides administrators with wizards and dashboards filled with best practices to get Enterprise Vault up and running in minutes with easy day-to-day management.

- Flexible PST Migration

Automatically locates and migrates existing PST files in the archive re-gaining control of the information contained with those files and making it easier for

Data Sheet: Archiving Symantec Enterprise Vault™ for Microsoft® Exchange

e-discovery, reduce storage costs and backup pain and mitigate risk associate with these files.

For additional Enterprise Vault Agents and Options and system requirements, please visit the Enterprise Vault product page at www.symantec.com/enterprisevault.

More information

Visit our Web site

<http://enterprise.symantec.com>

To speak with a Product Specialist in the U.S.

Call toll-free 1 (800) 745 6054

To speak with a Product Specialist outside the U.S.

For specific country offices and contact numbers, please visit our Web site.

About Symantec

Symantec is a global leader in providing security, storage, and systems management solutions to help businesses and consumers secure and manage their information. Headquartered in Cupertino, Calif., Symantec has operations in more than 40 countries. More information is available at www.symantec.com.

Symantec World Headquarters

20330 Stevens Creek Blvd.
Cupertino, CA 95014 USA
+1 (408) 517 8000
1 (800) 721 3934
www.symantec.com

For further information please contact:

Arcplace 

Arcplace AG, Seehofstrasse 6, CH-8008 Zürich
T: +41 44 260 80 00 / www.arcplace.ch / info@arcplace.ch

Archiving & Backup Solutions

Microsoft
GOLD CERTIFIED
Partner

