

Managed Email Archiving

Key Benefits

Main benefits of Arcplace Managed Email Archiving:

- Fully managed state-of-the-art email archiving service
- No initial investments
- Immediate compliance with Swiss and international regulations
- Reduces archiving costs significantly while increasing cost predictability
- Significant reduction of in-house email backup volume – up to 70%
- Eliminates most administrative functions associated with email archiving
- Ensures long-term integrity and accessibility of archived emails
- Fast deployment – in-service within 4 weeks

Email Challenges

In most organizations email storage requirements are running out of control because of simultaneous expansion on several fronts, including:

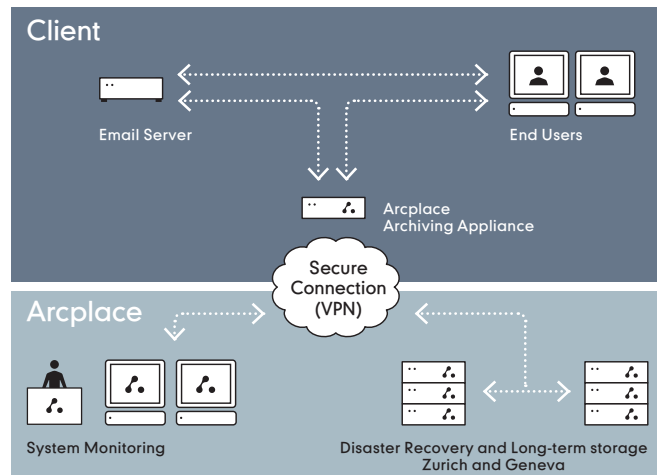
- Increasing number of email users
- Growth in the size of email messages
- Growth in the volume of email per user
- Regulatory and corporate governance requirements forcing organizations to keep emails for longer periods of time

Enterprises face the challenge of implementing a strategy that tames the growth of email and satisfies email retention regulations and policies without hindering the productivity gains brought by email. What is worse, most commonly deployed strategies such as implementing mailbox policies, adding emails servers or storage or backing-up older emails to offline storage media, do not address the real issues.

Managed Email Archiving

Using leading technology and industry best practice, Arcplace has developed a unique fully managed email archiving solution that allows organizations to maximize the benefits of email as a communications tool while elegantly managing both rapid message volume growth and the numerous internal and external retention and accessibility requirements.

Managed Email Archiving provides a cost effective, innovative and seamless approach to efficiently manage email storage via automated, policy-controlled archiving to centralized online storage.



Arcplace Managed Email Archiving

Managed Email Archiving integrates with Microsoft Exchange and Notes environments to help businesses to take control over the explosive growth of vital business content found in email.

Managed Email Archiving makes use of an Appliance to collect, index and encrypt emails at the customer premises before transferring them to a highly secure and fully redundant long-term online archiving platform.

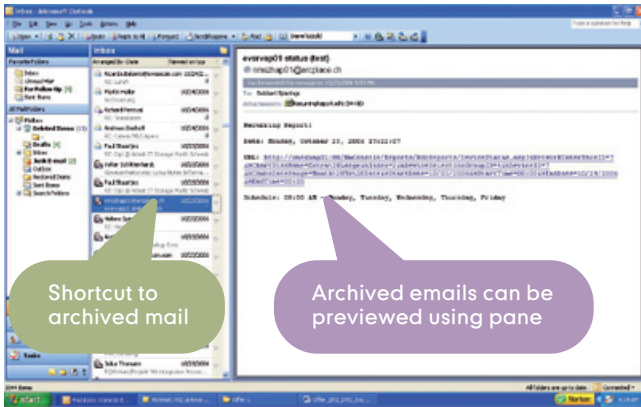


Arcplace Archiving Appliance

To maximize the availability and performance of the Managed Email Archiving Service, Arcplace operates and manages the Appliances and archiving platform centrally from its Operations Center in Zurich.

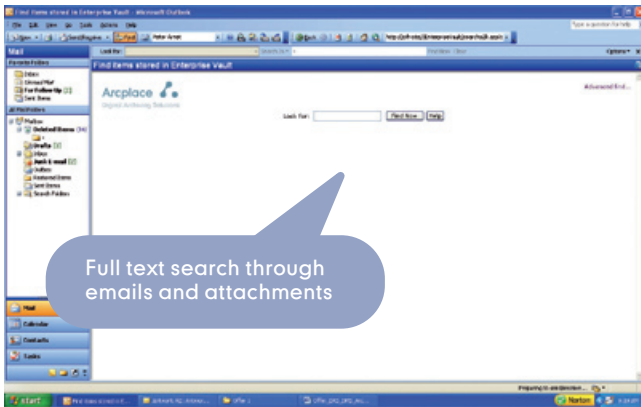
Functionality

Email Archiving – Eliminates quotas, message size restrictions and gives users a mailbox of virtually unlimited size. Customer-defined policies automatically archive individual mailbox email and attachments out of the email server to the Arcplace Appliance and long-term storage platform. Optionally, shortcuts can be left behind allowing end-users to easily view or restore the original items transparently through the native or via extended web-based search functions.



End-user view of archived mails

This allows the Exchange or Notes server to focus on the dynamic handling of newer information while Managed Email Archiving acts as a high-scale, long-term repository for older messages. Email server performance is dramatically improved and users enjoy instant access to all of their email without the associated cost and management issues.



Search and retrieve interface

PST/NSF Migration – Managed Email Archiving allows organizations to migrate all existing PST or local NSF file data into the archive repository. Restoring, user search and accessibility to this data enables the organization to effectively achieve PST or local NSF eradication.

Offline Archive for Laptop Access – Offline Archive provides laptop access to archived email even when not connected to the corporate network. The solution can be configured to provide users with a local archive stored on their laptop hard drive. When a disconnected user tries to access an archived item via a shortcut, this item will be retrieved from the local archive, ensuring that they have access to important content wherever it is located. At the same time the user’s email is still archived to the corporate archive, so it is not vulnerable to loss or damage.

For further information please contact us:

Arcplace AG
 Seehofstrasse 6, CH-8008 Zürich
 T:+41 44 260 80 00 / info@arcplace.ch
 www.arcplace.ch

Mail Server Migration and Backup – Archiving older items with Managed Email Archiving significantly reduces the size of the email store. The reduction in the size of message store allows moving emails to newer versions much faster, providing a reduction in cost and time associated with migration, as well as improving server consolidation ratios. The reduction of data to be stored by the email server furthermore significantly reduces the volume of the data to be backed up. This reduces costs and time required to restore the email server in case of failure.

Email Journaling – Managed Email Archiving works seamlessly with Exchange or Notes journaling in order to satisfy the most stringent corporate legal or regulatory retention requirements. Managed Email Archiving can be configured to retain a copy of all email messages sent and received onto online WORM storage, ensuring that they are archived in accordance with Swiss and international message retention regulations. An advanced search and retrieve interface and full audit-trail functionality allows for efficient and compliant electronic discovery.

Service Components

The Managed Email Archiving Service includes the following components:

| Set-up | Management |
|------------------------------------|---|
| Preparation workshop | Infrastructure and application monitoring |
| Appliance installation | Software updates and license management |
| Archiving policy implementation | Hardware maintenance and replacement |
| Long-term storage provisioning | Appliance backup |
| Integration into system monitoring | Change management |
| Documentation | Reporting |

Key Features

- Fully managed email archiving solution for Microsoft Exchange and Lotus Notes
- Emails can be archived manually or automatically
- Seamless integration with existing email clients
- Comprehensive full text search functionality
- Elimination of PST and local NSF files
- Single instancing of archived emails
- Offline access to archived emails for laptops
- Emails are archived on standard and/or WORM hard disk media
- Emails can be encrypted by the Arcplace Appliance
- Email content is rendered into long-term format

Powered by symantec.